



Edinburg's

Newest Affordable Luxury Community



INTERIOR FEATURES

- Cable Ready
- Ceiling Fans
- Smoke Free
- Air Conditioning
- Pantry
- Refrigerator With Icemaker
- Quartz Countertops
- Island Kitchen
- Dishwasher/Range/Microwave
- Disposal
- Washer/Dryer Hookup
- Stainless Steel Appliances

COMMUNITY AMENITIES

- Playground
- Planned Social Activities
- Laundry Facilities
- Clubhouse
- Business Center
- Gated Community
- Sparkling Swimming Pool
- Fitness Center

Avanti East...

Spacious floorplans designed for living! Live, work, and play ... it's all just a heartbeat away when you make Avanti East Apartments your new home. Conveniently located in Edinburg, Avanti East is convenient to shopping, dining and just a short drive to Downtown McAllen.

At Avanti East, you'll have easy access to I-69C, I-2 and US-281. Edinburg Scenic Wetlands & World Birding Center is also nearby.

Other Near by attractions include, Bert Ogden Arena, HEB Park, AMC Edinburg 18, Walmart Supercenter, Junior's Supermarket, Trenton Crossing, H-E-B Grocery, Edinburg Regional Hospital, Edinburg Children Hospital, Doctors Hospital at Renaissance, Boggus Ford Events Center, La Plaza Mall, Cinemark Movie Bistro and Shoppes at Rio Grande Valley.



(956) 601-2198

1215 E. Owassa Road
Edinburg, TX 78542



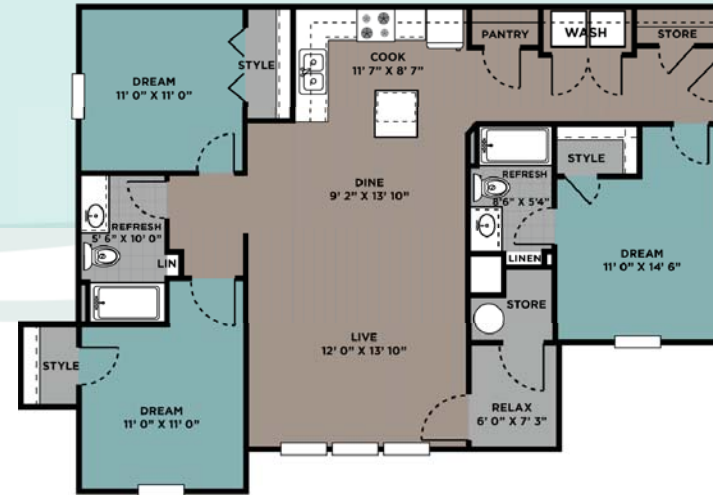
Manager@avantieastpts.com

avantieastpts.com

A 1 BED / 1 BATH 750 Sq. Ft.*



C 3 BED/ 2 BATH 1,231 Sq. Ft.*



B 2 BED / 2 BATH 1,050 Sq. Ft.*



People with disabilities who wish to request a reasonable accommodation to complete the application process should contact the Property Manager. Spanish speakers and those requiring an interpreter should call the office at (956) 601-2198.

Las personas con discapacidades que desean solicitar un alojamiento razonable para completar el proceso de solicitud deben ponerse en contacto con el administrador de la propiedad. Los hispanohablantes y los que requieren un intérprete deben llamar a la oficina en (956) 601-2198.



avantieastapts.com



*All dimensions and Measurements are approximate.